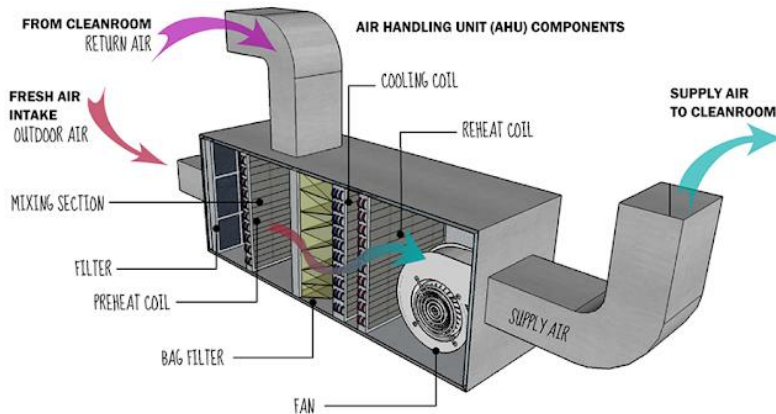


Model Code: **AHU-CUST**



The air handling unit (AHU) is the heart of central air conditioning. It collects outside air and room air, removes dust and other particles from the collected air, adjusts the temperature and humidity and then supplies comfortable and refreshing air-conditioned air into the rooms through ducts.



## KEY FEATURES

- ✓ The training consists of sensors and detectors listed as Temperature, Pressure, air leakage sensor, air quality sensor, water flow sensors, smoke sensor etc. of suitable measuring values used in AHU of central air conditioning system mounted on the board.
- ✓ The board is fitted fit into the trolley with wheels. The board with sensors and detectors is clearly visible.
- ✓ All sensors and detectors have a maximum output of 12V.
- ✓ The electrical connection for each component is brought out to terminal Block and digital display of each sensor through selector switch.
- ✓ The terminals and wiring are clearly visible for study purpose.
- ✓ The training unit comes with an experiment manual containing standard operation procedure, step-by-step guide through experiments.

## CONTACT US



E-mail: [info@mechmatics.com](mailto:info@mechmatics.com)

Website: [www.mechmatics.com](http://www.mechmatics.com)

## Works

Plot No. 553, Phase II  
GIDC Vatva, Ahmedabad -382445  
Gujarat India

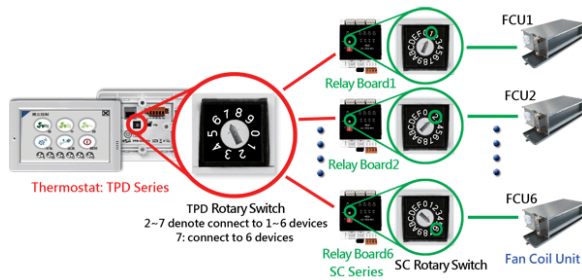
[info@mechmatics.com](mailto:info@mechmatics.com)

Tel: 079-27541281

Mobile: +91-9724749118

# FCU SYSTEM TRAINING BOARD

Model Code: FCU Circuit Board



A fan coil unit (FCU) contains a fan which draws the air in a space into the unit then blows it over a cooling or heating coil. The air comes out of the FCU either cooler or hotter than before. They are used in some office buildings and shopping centres and typically specified where there are multiple small spaces requiring individual control.



## KEY FEATURES

- ✓ The training consists of sensors and detectors listed as Room Temperature, Coil temperature sensor, Humidity Sensor, Humidity sensors etc. of suitable measuring values used in FCU of central air conditioning system/Indoor unit of Split air conditioner and VRV systems mounted on the board.
- ✓ The board is fitted into the trolley with wheels. The board with sensors and detectors is clearly visible.
- ✓ All sensors and detectors have a maximum output of 12V.
- ✓ The electrical connection for each component is brought out to terminal Block.
- ✓ The terminals and wiring are clearly visible for study purpose.
- ✓ The training unit comes with an experiment manual containing standard operation procedure, step-by-step guide through experiments.

### CONTACT US



E-mail: [info@mechmatics.com](mailto:info@mechmatics.com)

Website: [www.mechmatics.com](http://www.mechmatics.com)

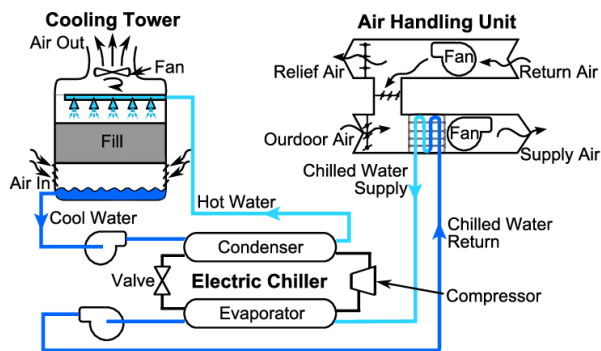
### Works

Plot No. 553, Phase II  
GIDC Vatva, Ahmedabad -382445  
Gujarat India

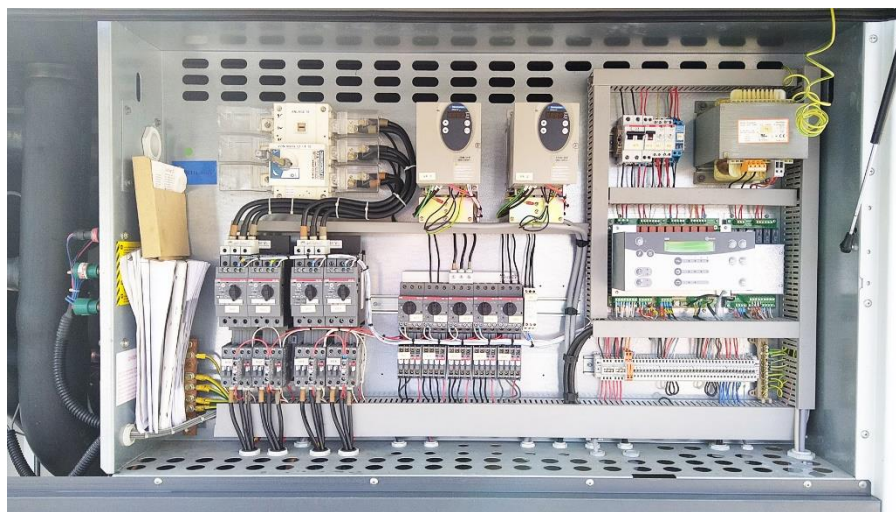
[info@mechmatics.com](mailto:info@mechmatics.com)

Tel: 079-27541281

Mobile: +91-9724749118



A chiller (cooling water circulation device) is a general term for a device that controls the temperature by circulating a liquid such as water or heat medium as a cooling liquid whose temperature was adjusted by the refrigerant cycle.



## KEY FEATURES

- ✓ The training consists of sensors and detectors listed as Temperature, water level, High Pressure, Low pressure, Differential pressure, water flow sensors etc. of suitable measuring values as used in commercial chiller of central air conditioning system mounted on the board.
- ✓ The board is fitted into the trolley with wheels. The board with sensors and detectors is clearly visible.
- ✓ All sensors and detectors have a maximum output of 12V.
- ✓ The electrical connection for each component is brought out to terminal Block and digital display of each sensor through selector switch.
- ✓ The terminals and wiring are clearly visible for study purpose.
- ✓ The training unit comes with an experiment manual containing standard operation procedure, step-by-step guide through experiments.

## CONTACT US



E-mail: [info@mechmatics.com](mailto:info@mechmatics.com)

Website: [www.mechmatics.com](http://www.mechmatics.com)

## Works

Plot No. 553, Phase II  
GIDC Vatva, Ahmedabad -382445  
Gujarat India

[info@mechmatics.com](mailto:info@mechmatics.com)

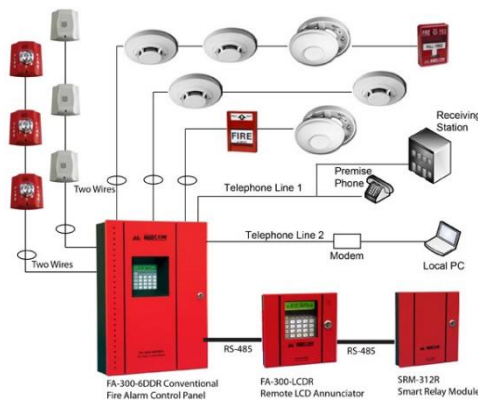
Tel: 079-27541281

Mobile: +91-9724749118

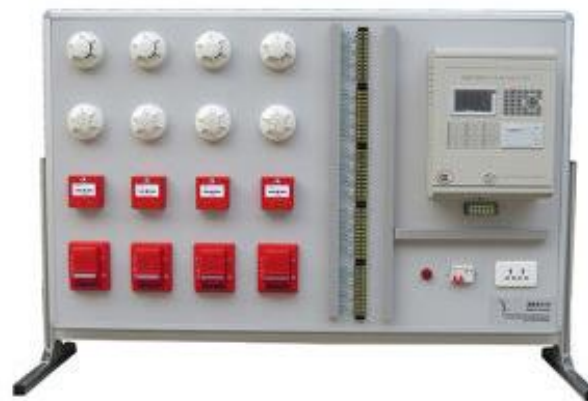


# FIRE SYSTEM TRAINING BOARD

Model Code: Fire System TB



This Fire Safety Training module is designed to teach you preventive measures that will eliminate or minimize causes of fire or fire hazards in the workplace, and to teach you proper emergency and evacuation procedures in the event of a fire.



## KEY FEATURES

- ✓ The board is fitted into the trolley with wheels. The board with sensors and detectors is clearly visible.
- ✓ All sensors and detectors have a maximum output of 12V.
- ✓ The electrical connection for each component is brought out to terminal Block and digital display of each sensor through selector switch.
- ✓ The terminals and wiring are clearly visible for study purpose.
- ✓ The training unit comes with an experiment manual containing standard operation procedure, step-by-step guide through experiments.

## CONTACT US

## Works

Plot No. 553, Phase II  
GIDC Vatva, Ahmedabad -382445  
Gujarat India

[info@mechmatics.com](mailto:info@mechmatics.com)

Tel: 079-27541281

Mobile: +91-9724749118